

Test Report

No.: GZ0712182537/CHEM

Date: DEC 14, 2007

Page 1 of 17

SHENZHEN SURONG CAPACITORS CO., LTD
SURONG IND. PARK, KUKENG, GUANLAN TOWN, SHENZHEN, GUANGDONG, CHINA

The following sample(s) was/were submitted and identified on behalf of the applicant as 1. aluminum foil 2. cp lead 3. solder 4. PVC wire 5. plastic film 6. metallized film 7. plastic box (yellow) 8. plastic box (black) 9. plastic box (gray) 10. epoxy resin (yellow) 11. epoxy resin (red) 12. epoxy resin (black) 13. epoxy resin (gray) 14. epoxy resin (green) 15. UV ink (black) 16. UV ink (silvery) 17. pet tape

Client Reference: CL11, CL20, CL21, CL21B, CL21X, CL233X, CBB11, CBB13, CBB20, CBB21, CBB21B, CBB22, CBB6, CBB62, CBB81, CBB90, MPX/MKP

SGS Ref No. : SZ10728268
Sample Receiving Date : DEC 03, 2007
Further Sample Receiving Date : DEC 10, 2007
Testing Period : DEC 03, 2007 TO DEC 14, 2007

Test Requested : In accordance with the RoHS Directive 2002/95/EC, and its amendment directives.

Test Method : With reference to IEC 62321 Ed.1 111/54/CDV
Procedures for the Determination of Levels of Regulated Substances in Electrotechnical Products
(1) Determination of Cadmium by ICP.
(2) Determination of Lead by ICP.
(3) Determination of Mercury by ICP.
(4) Determination of Hexavalent Chromium by Colorimetric Method.
(5) Determination of PBBs and PBDEs by GC-MS.

Test Results : Please refer to next page.

Conclusion : Based on the performed tests on submitted sample(s), the results **comply with the RoHS Directive 2002/95/EC** and its subsequent amendments.

Signed for and on behalf of
SGS-CSTC Ltd.



Jiang YongPing, Terry
Sr. Engineer

This Test Report is issued by the Company subject to its General Conditions of Service printed overleaf or available on request and accessible at www.sgs.com. Attention is drawn to the limitations of liability, indemnification and jurisdictional issues defined therein. Unless otherwise stated the results shown in this test report refer only to the sample(s) tested. This test report cannot be reproduced, except in full, without prior written permission of the Company. Any unauthorized alteration, forgery or falsification of the content or appearance of this report is unlawful and offenders may be prosecuted to the fullest extent of the law.

Test results by chemical method (Unit: mg/kg)

Test Item(s):	Method (refer to)	No.1	No.2	No.3	MDL	RoHS Limit
Cadmium(Cd)	(1)	N.D.	N.D.	N.D.	2	100
Lead (Pb)	(2)	11	N.D.	109	2	1000
Mercury (Hg)	(3)	N.D.	N.D.	N.D.	2	1000
Hexavalent Chromium (CrVI) by alkaline extraction	(4)	---	---	---	2	1000
Hexavalent Chromium (CrVI) by boiling water extraction	(4)	Negative	Negative	Negative	See Note 5	#
Sum of PBBs		---	---	---	-	1000
Monobromobiphenyl		---	---	---	5	
Dibromobiphenyl		---	---	---	5	
Tribromobiphenyl		---	---	---	5	
Tetrabromobiphenyl		---	---	---	5	
Pentabromobiphenyl		---	---	---	5	
Hexabromobiphenyl		---	---	---	5	
Heptabromobiphenyl		---	---	---	5	
Octabromobiphenyl		---	---	---	5	
Nonabromobiphenyl		---	---	---	5	
Decabromobiphenyl		---	---	---	5	
Sum of PBDEs (Mono to Nona)(Note 4)	(5)	---	---	---	-	1000
Monobromodiphenyl ether		---	---	---	5	
Dibromodiphenyl ether		---	---	---	5	
Tribromodiphenyl ether		---	---	---	5	
Tetrabromodiphenyl ether		---	---	---	5	
Pentabromodiphenyl ether		---	---	---	5	
Hexabromodiphenyl ether		---	---	---	5	
Heptabromodiphenyl ether		---	---	---	5	
Octabromodiphenyl ether		---	---	---	5	
Nonabromodiphenyl ether		---	---	---	5	
Decabromodiphenyl ether		---	---	---	5	
Sum of PBDEs (Mono to Deca)		---	---	---	-	-

This Test Report is issued by the Company subject to its General Conditions of Service printed overleaf or available on request and accessible at www.sgs.com. Attention is drawn to the limitations of liability, indemnification and jurisdictional issues defined therein. Unless otherwise stated the results shown in this test report refer only to the sample(s) tested. This test report cannot be reproduced, except in full, without prior written permission of the Company. Any unauthorized alteration, forgery or falsification of the content or appearance of this report is unlawful and offenders may be prosecuted to the fullest extent of the law.

Test Item(s):	Method (refer to)	No.4	No.5	No.6	MDL	RoHS Limit
Cadmium(Cd)	(1)	N.D.	N.D.	N.D.	2	100
Lead (Pb)	(2)	N.D.	N.D.	N.D.	2	1000
Mercury (Hg)	(3)	N.D.	N.D.	N.D.	2	1000
Hexavalent Chromium (CrVI) by alkaline extraction	(4)	N.D.	---	N.D.	2	1000
Hexavalent Chromium (CrVI) by boiling water extraction	(4)	---	Negative	---	See Note 5	#
Sum of PBBs		N.D.	---	N.D.	-	1000
Monobromobiphenyl		N.D.	---	N.D.	5	
Dibromobiphenyl		N.D.	---	N.D.	5	
Tribromobiphenyl		N.D.	---	N.D.	5	
Tetrabromobiphenyl		N.D.	---	N.D.	5	
Pentabromobiphenyl		N.D.	---	N.D.	5	
Hexabromobiphenyl		N.D.	---	N.D.	5	
Heptabromobiphenyl		N.D.	---	N.D.	5	
Octabromobiphenyl		N.D.	---	N.D.	5	
Nonabromobiphenyl		N.D.	---	N.D.	5	
Decabromobiphenyl		N.D.	---	N.D.	5	
Sum of PBDEs (Mono to Nona)(Note 4)	(5)	N.D.	---	N.D.	-	1000
Monobromodiphenyl ether		N.D.	---	N.D.	5	
Dibromodiphenyl ether		N.D.	---	N.D.	5	
Tribromodiphenyl ether		N.D.	---	N.D.	5	
Tetrabromodiphenyl ether		N.D.	---	N.D.	5	
Pentabromodiphenyl ether		N.D.	---	N.D.	5	
Hexabromodiphenyl ether		N.D.	---	N.D.	5	
Heptabromodiphenyl ether		N.D.	---	N.D.	5	
Octabromodiphenyl ether		N.D.	---	N.D.	5	
Nonabromodiphenyl ether		N.D.	---	N.D.	5	
Decabromodiphenyl ether		N.D.	---	N.D.	5	
Sum of PBDEs (Mono to Deca)		N.D.	---	N.D.	-	-

This Test Report is issued by the Company subject to its General Conditions of Service printed overleaf or available on request and accessible at www.sgs.com. Attention is drawn to the limitations of liability, indemnification and jurisdictional issues defined therein. Unless otherwise stated the results shown in this test report refer only to the sample(s) tested. This test report cannot be reproduced, except in full, without prior written permission of the Company. Any unauthorized alteration, forgery or falsification of the content or appearance of this report is unlawful and offenders may be prosecuted to the fullest extent of the law.

Test Item(s):	Method (refer to)	No.7	No.8	No.9	MDL	RoHS Limit
Cadmium(Cd)	(1)	N.D.	N.D.	N.D.	2	100
Lead (Pb)	(2)	N.D.	9	11	2	1000
Mercury (Hg)	(3)	N.D.	N.D.	N.D.	2	1000
Hexavalent Chromium (CrVI) by alkaline extraction	(4)	N.D.	N.D.	N.D.	2	1000
Hexavalent Chromium (CrVI) by boiling water extraction	(4)	---	---	---	See Note 5	#
Sum of PBBs		N.D.	N.D.	N.D.	-	1000
Monobromobiphenyl		N.D.	N.D.	N.D.	5	
Dibromobiphenyl		N.D.	N.D.	N.D.	5	
Tribromobiphenyl		N.D.	N.D.	N.D.	5	
Tetrabromobiphenyl		N.D.	N.D.	N.D.	5	
Pentabromobiphenyl		N.D.	N.D.	N.D.	5	
Hexabromobiphenyl		N.D.	N.D.	N.D.	5	
Heptabromobiphenyl		N.D.	N.D.	N.D.	5	
Octabromobiphenyl		N.D.	N.D.	N.D.	5	
Nonabromobiphenyl		N.D.	N.D.	N.D.	5	
Decabromobiphenyl		N.D.	N.D.	N.D.	5	
Sum of PBDEs (Mono to Nona)(Note 4)	(5)	N.D.	N.D.	N.D.	-	1000
Monobromodiphenyl ether		N.D.	N.D.	N.D.	5	
Dibromodiphenyl ether		N.D.	N.D.	N.D.	5	
Tribromodiphenyl ether		N.D.	N.D.	N.D.	5	
Tetrabromodiphenyl ether		N.D.	N.D.	N.D.	5	
Pentabromodiphenyl ether		N.D.	N.D.	N.D.	5	
Hexabromodiphenyl ether		N.D.	N.D.	N.D.	5	
Heptabromodiphenyl ether		N.D.	N.D.	N.D.	5	
Octabromodiphenyl ether		N.D.	N.D.	N.D.	5	
Nonabromodiphenyl ether		N.D.	N.D.	N.D.	5	
Decabromodiphenyl ether		N.D.	N.D.	N.D.	5	
Sum of PBDEs (Mono to Deca)		N.D.	N.D.	N.D.	-	-

This Test Report is issued by the Company subject to its General Conditions of Service printed overleaf or available on request and accessible at www.sgs.com. Attention is drawn to the limitations of liability, indemnification and jurisdictional issues defined therein. Unless otherwise stated the results shown in this test report refer only to the sample(s) tested. This test report cannot be reproduced, except in full, without prior written permission of the Company. Any unauthorized alteration, forgery or falsification of the content or appearance of this report is unlawful and offenders may be prosecuted to the fullest extent of the law.

Test Item(s):	Method (refer to)	No.10	No.11	No.12	MDL	RoHS Limit
Cadmium(Cd)	(1)	N.D.	N.D.	N.D.	2	100
Lead (Pb)	(2)	8	N.D.	N.D.	2	1000
Mercury (Hg)	(3)	N.D.	N.D.	N.D.	2	1000
Hexavalent Chromium (CrVI) by alkaline extraction	(4)	N.D.	N.D.	N.D.	2	1000
Hexavalent Chromium (CrVI) by boiling water extraction	(4)	---	---	---	See Note 5	#
Sum of PBBs		N.D.	N.D.	N.D.	-	1000
Monobromobiphenyl		N.D.	N.D.	N.D.	5	
Dibromobiphenyl		N.D.	N.D.	N.D.	5	
Tribromobiphenyl		N.D.	N.D.	N.D.	5	
Tetrabromobiphenyl		N.D.	N.D.	N.D.	5	
Pentabromobiphenyl		N.D.	N.D.	N.D.	5	
Hexabromobiphenyl		N.D.	N.D.	N.D.	5	
Heptabromobiphenyl		N.D.	N.D.	N.D.	5	
Octabromobiphenyl		N.D.	N.D.	N.D.	5	
Nonabromobiphenyl		N.D.	N.D.	N.D.	5	
Decabromobiphenyl		N.D.	N.D.	N.D.	5	
Sum of PBDEs (Mono to Nona)(Note 4)	(5)	N.D.	N.D.	N.D.	-	1000
Monobromodiphenyl ether		N.D.	N.D.	N.D.	5	
Dibromodiphenyl ether		N.D.	N.D.	N.D.	5	
Tribromodiphenyl ether		N.D.	N.D.	N.D.	5	
Tetrabromodiphenyl ether		N.D.	N.D.	N.D.	5	
Pentabromodiphenyl ether		N.D.	N.D.	N.D.	5	
Hexabromodiphenyl ether		N.D.	N.D.	N.D.	5	
Heptabromodiphenyl ether		N.D.	N.D.	N.D.	5	
Octabromodiphenyl ether		N.D.	N.D.	N.D.	5	
Nonabromodiphenyl ether		N.D.	N.D.	N.D.	5	
Decabromodiphenyl ether		N.D.	N.D.	N.D.	5	
Sum of PBDEs (Mono to Deca)		N.D.	N.D.	N.D.	-	-

This Test Report is issued by the Company subject to its General Conditions of Service printed overleaf or available on request and accessible at www.sgs.com. Attention is drawn to the limitations of liability, indemnification and jurisdictional issues defined therein. Unless otherwise stated the results shown in this test report refer only to the sample(s) tested. This test report cannot be reproduced, except in full, without prior written permission of the Company. Any unauthorized alteration, forgery or falsification of the content or appearance of this report is unlawful and offenders may be prosecuted to the fullest extent of the law.

GZCM 185 1822

Test Item(s):	Method (refer to)	No.13	No.14	No.15	MDL	RoHS Limit
Cadmium(Cd)	(1)	N.D.	N.D.	N.D.	2	100
Lead (Pb)	(2)	N.D.	N.D.	N.D.	2	1000
Mercury (Hg)	(3)	N.D.	N.D.	N.D.	2	1000
Hexavalent Chromium (CrVI) by alkaline extraction	(4)	N.D.	N.D.	N.D.	2	1000
Hexavalent Chromium (CrVI) by boiling water extraction	(4)	---	---	---	See Note 5	#
Sum of PBBs		N.D.	N.D.	N.D.	-	1000
Monobromobiphenyl		N.D.	N.D.	N.D.	5	
Dibromobiphenyl		N.D.	N.D.	N.D.	5	
Tribromobiphenyl		N.D.	N.D.	N.D.	5	
Tetrabromobiphenyl		N.D.	N.D.	N.D.	5	
Pentabromobiphenyl		N.D.	N.D.	N.D.	5	
Hexabromobiphenyl		N.D.	N.D.	N.D.	5	
Heptabromobiphenyl		N.D.	N.D.	N.D.	5	
Octabromobiphenyl		N.D.	N.D.	N.D.	5	
Nonabromobiphenyl		N.D.	N.D.	N.D.	5	
Decabromobiphenyl		N.D.	N.D.	N.D.	5	
Sum of PBDEs (Mono to Nona)(Note 4)	(5)	N.D.	N.D.	N.D.	-	1000
Monobromodiphenyl ether		N.D.	N.D.	N.D.	5	
Dibromodiphenyl ether		N.D.	N.D.	N.D.	5	
Tribromodiphenyl ether		N.D.	N.D.	N.D.	5	
Tetrabromodiphenyl ether		N.D.	N.D.	N.D.	5	
Pentabromodiphenyl ether		N.D.	N.D.	N.D.	5	
Hexabromodiphenyl ether		N.D.	N.D.	N.D.	5	
Heptabromodiphenyl ether		N.D.	N.D.	N.D.	5	
Octabromodiphenyl ether		N.D.	N.D.	N.D.	5	
Nonabromodiphenyl ether		N.D.	N.D.	N.D.	5	
Decabromodiphenyl ether		N.D.	N.D.	N.D.	5	
Sum of PBDEs (Mono to Deca)		N.D.	N.D.	N.D.	-	-

This Test Report is issued by the Company subject to its General Conditions of Service printed overleaf or available on request and accessible at www.sgs.com. Attention is drawn to the limitations of liability, indemnification and jurisdictional issues defined therein. Unless otherwise stated the results shown in this test report refer only to the sample(s) tested. This test report cannot be reproduced, except in full, without prior written permission of the Company. Any unauthorized alteration, forgery or falsification of the content or appearance of this report is unlawful and offenders may be prosecuted to the fullest extent of the law.

GZCM 1851823

Test Item(s):	Method (refer to)	No.16	No.17	No.18	MDL	RoHS Limit
Cadmium(Cd)	(1)	N.D.	N.D.	N.D.	2	100
Lead (Pb)	(2)	N.D.	17	N.D.	2	1000
Mercury (Hg)	(3)	N.D.	N.D.	N.D.	2	1000
Hexavalent Chromium (CrVI) by alkaline extraction	(4)	N.D.	N.D.	N.D.	2	1000
Hexavalent Chromium (CrVI) by boiling water extraction	(4)	---	---	---	See Note 5	#
Sum of PBBs		N.D.	N.D.	N.D.	-	1000
Monobromobiphenyl		N.D.	N.D.	N.D.	5	
Dibromobiphenyl		N.D.	N.D.	N.D.	5	
Tribromobiphenyl		N.D.	N.D.	N.D.	5	
Tetrabromobiphenyl		N.D.	N.D.	N.D.	5	
Pentabromobiphenyl		N.D.	N.D.	N.D.	5	
Hexabromobiphenyl		N.D.	N.D.	N.D.	5	
Heptabromobiphenyl		N.D.	N.D.	N.D.	5	
Octabromobiphenyl		N.D.	N.D.	N.D.	5	
Nonabromobiphenyl		N.D.	N.D.	N.D.	5	
Decabromobiphenyl		N.D.	N.D.	N.D.	5	
Sum of PBDEs (Mono to Nona)(Note 4)	(5)	N.D.	N.D.	N.D.	-	1000
Monobromodiphenyl ether		N.D.	N.D.	N.D.	5	
Dibromodiphenyl ether		N.D.	N.D.	N.D.	5	
Tribromodiphenyl ether		N.D.	N.D.	N.D.	5	
Tetrabromodiphenyl ether		N.D.	N.D.	N.D.	5	
Pentabromodiphenyl ether		N.D.	N.D.	N.D.	5	
Hexabromodiphenyl ether		N.D.	N.D.	N.D.	5	
Heptabromodiphenyl ether		N.D.	N.D.	N.D.	5	
Octabromodiphenyl ether		N.D.	N.D.	N.D.	5	
Nonabromodiphenyl ether		N.D.	N.D.	N.D.	5	
Decabromodiphenyl ether		N.D.	N.D.	N.D.	5	
Sum of PBDEs (Mono to Deca)		N.D.	N.D.	N.D.	-	-

Test Part Description:

- No.1 Silvery foil (1)
- No.2 Silvery metal wire (2)
- No.3 Silvery metal (solder) (3)
- No.4 Black plastic w/ white printing (jacket) (4)
- No.5 Silvery plated metal wire (4)
- No.6 Transparent plastic film (5)
- No.7 Silvery film (6)
- No.8 Yellow plastic (7)
- No.9 Black plastic (8)
- No.10 Gray plastic (9)
- No.11 Yellow solid material (10)
- No.12 Red solid material (11)

This Test Report is issued by the Company subject to its General Conditions of Service printed overleaf or available on request and accessible at www.sgs.com. Attention is drawn to the limitations of liability, indemnification and jurisdictional issues defined therein. Unless otherwise stated the results shown in this test report refer only to the sample(s) tested. This test report cannot be reproduced, except in full, without prior written permission of the Company. Any unauthorized alteration, forgery or falsification of the content or appearance of this report is unlawful and offenders may be prosecuted to the fullest extent of the law.

GZCM 1851824

- No.13 Black solid material (12)
- No.14 Gray solid material (13)
- No.15 Green solid material (14)
- No.16 Black ink (15)
- No.17 Silver-gray ink (16)
- No.18 Yellow adhesive tape (17)

Note : 1. mg/kg = ppm

2. N.D. = Not Detected (< MDL)

3. MDL = Method Detection Limit

4. Sum of Mono to NonaBDE & according to 2005/717/EC DecaBDE is exempt.

5. **Spot-test:**

Negative = Absence of CrVI coating, Positive = Presence of CrVI coating;

(The tested sample should be further verified by boiling-water-extraction method if the spot test result cannot be confirmed.)

Boiling-water-extraction:

Negative = Absence of CrVI coating

Positive = Presence of CrVI coating; the detected concentration in boiling-water-extraction solution is equal or greater than 0.02 mg/kg with 50 cm² sample surface area.

6. # = Positive indicates the presence of CrVI on the tested areas and result be regarded as conflict with RoHS requirement.

Negative indicates the absence of CrVI on the tested areas and result be regarded as no conflict with RoHS requirement.

7. "-" = Not regulated

8. "---" = Not conducted

This Test Report is issued by the Company subject to its General Conditions of Service printed overleaf or available on request and accessible at www.sgs.com. Attention is drawn to the limitations of liability, indemnification and jurisdictional issues defined therein. Unless otherwise stated the results shown in this test report refer only to the sample(s) tested. This test report cannot be reproduced, except in full, without prior written permission of the Company. Any unauthorized alteration, forgery or falsification of the content or appearance of this report is unlawful and offenders may be prosecuted to the fullest extent of the law.

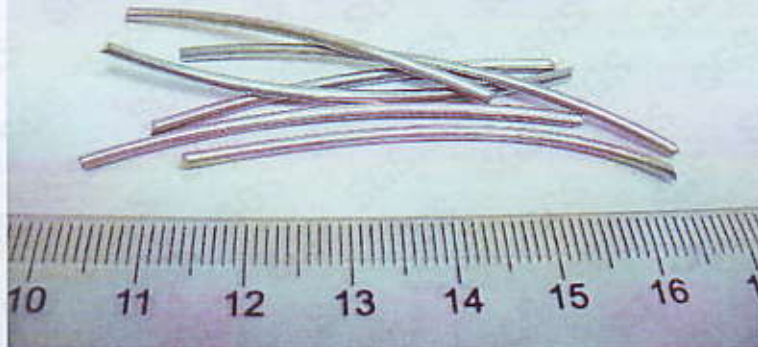
GZCM 1851825

Sample photo :



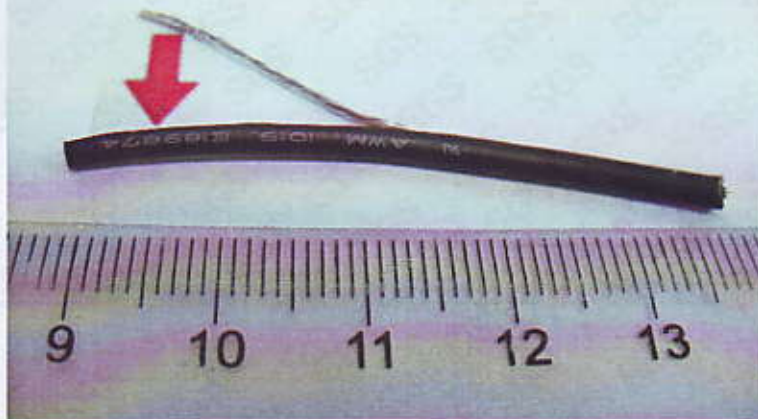
This Test Report is issued by the Company subject to its General Conditions of Service printed overleaf or available on request and accessible at www.sgs.com. Attention is drawn to the limitations of liability, indemnification and jurisdictional issues defined therein. Unless otherwise stated the results shown in this test report refer only to the sample(s) tested. This test report cannot be reproduced, except in full, without prior written permission of the Company. Any unauthorized alteration, forgery or falsification of the content or appearance of this report is unlawful and offenders may be prosecuted to the fullest extent of the law.

GZ0712182537/CHEM



No.3

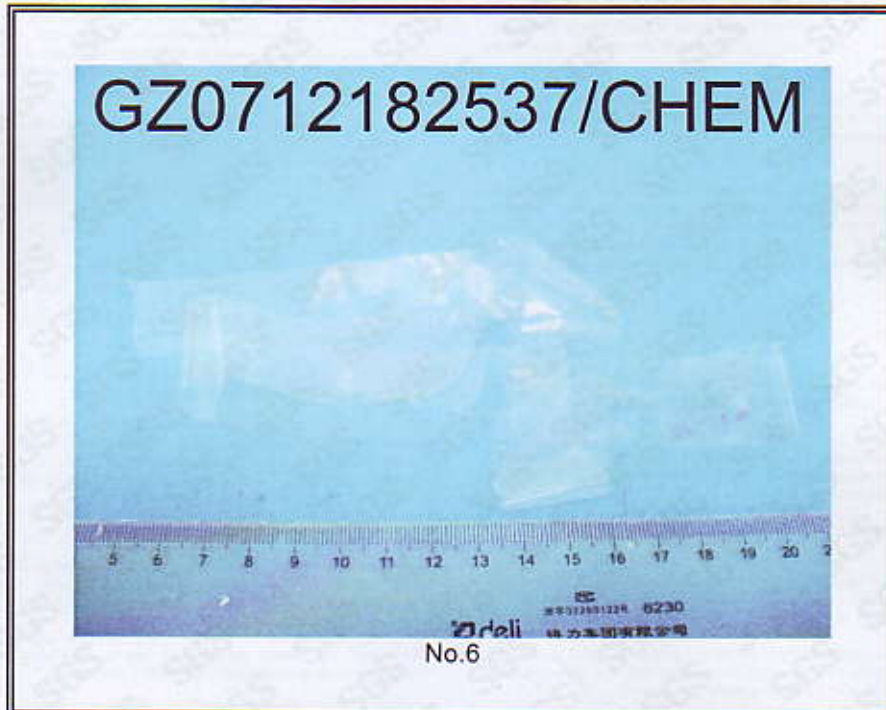
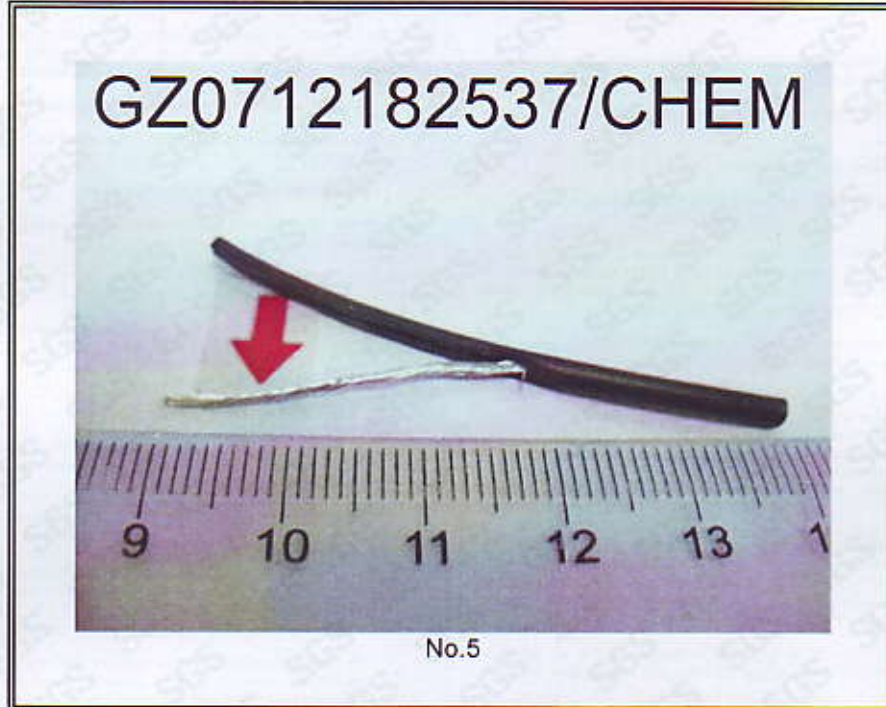
GZ0712182537/CHEM



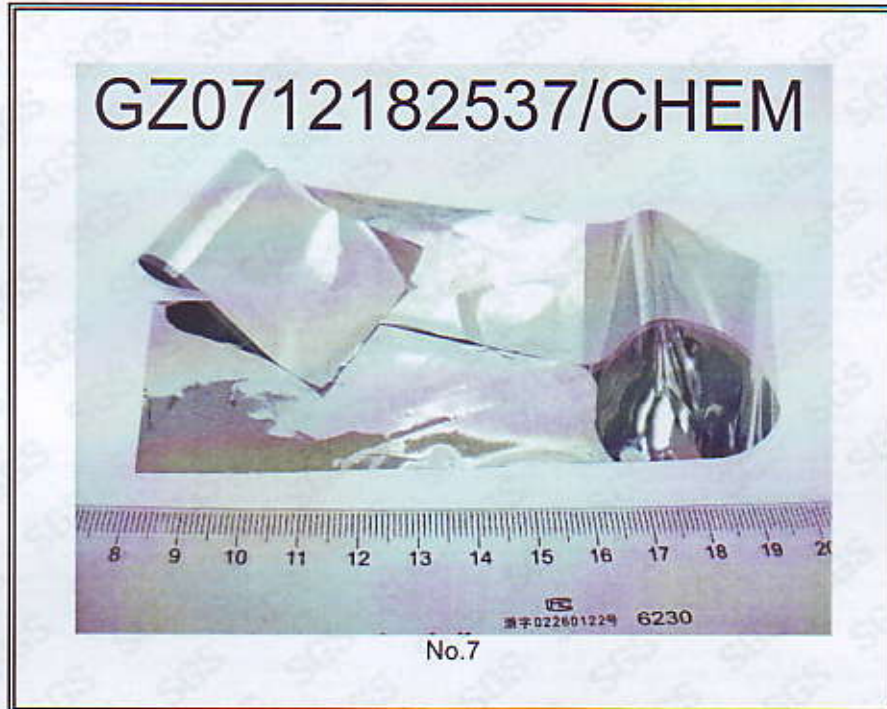
No.4

This Test Report is issued by the Company subject to its General Conditions of Service printed overleaf or available on request and accessible at www.sgs.com. Attention is drawn to the limitations of liability, indemnification and jurisdictional issues defined therein. Unless otherwise stated the results shown in this test report refer only to the sample(s) tested. This test report cannot be reproduced, except in full, without prior written permission of the Company. Any unauthorized alteration, forgery or falsification of the content or appearance of this report is unlawful and offenders may be prosecuted to the fullest extent of the law.

GZCM 185 1827

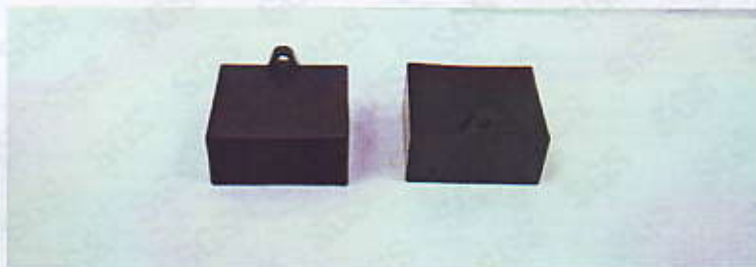


This Test Report is issued by the Company subject to its General Conditions of Service printed overleaf or available on request and accessible at www.sgs.com. Attention is drawn to the limitations of liability, indemnification and jurisdictional issues defined therein. Unless otherwise stated the results shown in this test report refer only to the sample(s) tested. This test report cannot be reproduced, except in full, without prior written permission of the Company. Any unauthorized alteration, forgery or falsification of the content or appearance of this report is unlawful and offenders may be prosecuted to the fullest extent of the law.



This Test Report is issued by the Company subject to its General Conditions of Service printed overleaf or available on request and accessible at www.sgs.com. Attention is drawn to the limitations of liability, indemnification and jurisdictional issues defined therein. Unless otherwise stated the results shown in this test report refer only to the sample(s) tested. This test report cannot be reproduced, except in full, without prior written permission of the Company. Any unauthorized alteration, forgery or falsification of the content or appearance of this report is unlawful and offenders may be prosecuted to the fullest extent of the law.

GZ0712182537/CHEM



No.9

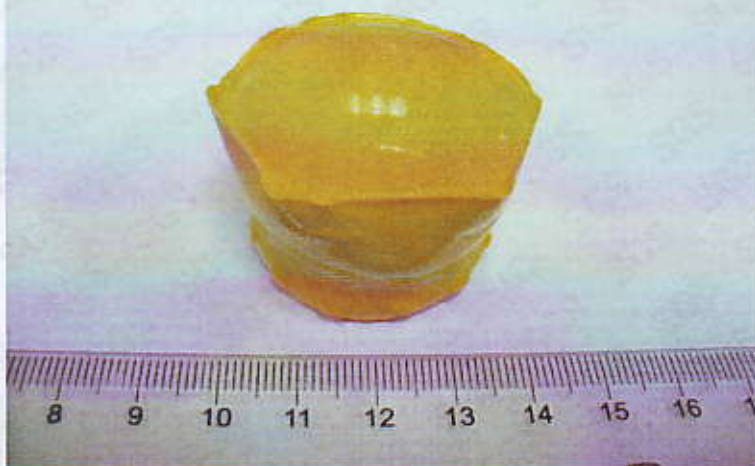
GZ0712182537/CHEM



No.10

This Test Report is issued by the Company subject to its General Conditions of Service printed overleaf or available on request and accessible at www.sgs.com. Attention is drawn to the limitations of liability, indemnification and jurisdictional issues defined therein. Unless otherwise stated the results shown in this test report refer only to the sample(s) tested. This test report cannot be reproduced, except in full, without prior written permission of the Company. Any unauthorized alteration, forgery or falsification of the content or appearance of this report is unlawful and offenders may be prosecuted to the fullest extent of the law.

GZ0712182537/CHEM



No.11

GZ0712182537/CHEM



No.12

This Test Report is issued by the Company subject to its General Conditions of Service printed overleaf or available on request and accessible at www.sgs.com. Attention is drawn to the limitations of liability, indemnification and jurisdictional issues defined therein. Unless otherwise stated the results shown in this test report refer only to the sample(s) tested. This test report cannot be reproduced, except in full, without prior written permission of the Company. Any unauthorized alteration, forgery or falsification of the content or appearance of this report is unlawful and offenders may be prosecuted to the fullest extent of the law.

GZ0712182537/CHEM



No.13

GZ0712182537/CHEM



No.14

This Test Report is issued by the Company subject to its General Conditions of Service printed overleaf or available on request and accessible at www.sgs.com. Attention is drawn to the limitations of liability, indemnification and jurisdictional issues defined therein. Unless otherwise stated the results shown in this test report refer only to the sample(s) tested. This test report cannot be reproduced, except in full, without prior written permission of the Company. Any unauthorized alteration, forgery or falsification of the content or appearance of this report is unlawful and offenders may be prosecuted to the fullest extent of the law.

GZ0712182537/CHEM



No.15

GZ0712182537/CHEM



No.16

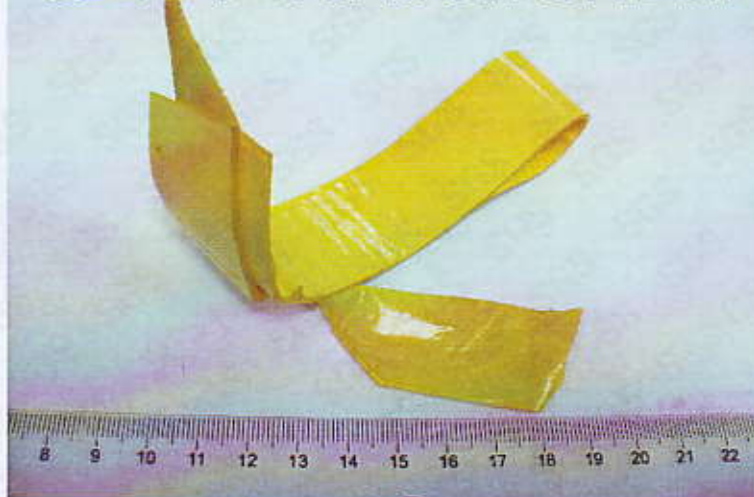
This Test Report is issued by the Company subject to its General Conditions of Service printed overleaf or available on request and accessible at www.sgs.com. Attention is drawn to the limitations of liability, indemnification and jurisdictional issues defined therein. Unless otherwise stated the results shown in this test report refer only to the sample(s) tested. This test report cannot be reproduced, except in full, without prior written permission of the Company. Any unauthorized alteration, forgery or falsification of the content or appearance of this report is unlawful and offenders may be prosecuted to the fullest extent of the law.

GZ0712182537/CHEM



No.17

GZ0712182537/CHEM



No.18

SGS authenticate the photo on original report only

*** End of Report ***

This Test Report is issued by the Company subject to its General Conditions of Service printed overleaf or available on request and accessible at www.sgs.com. Attention is drawn to the limitations of liability, indemnification and jurisdictional issues defined therein. Unless otherwise stated the results shown in this test report refer only to the sample(s) tested. This test report cannot be reproduced, except in full, without prior written permission of the Company. Any unauthorized alteration, forgery or falsification of the content or appearance of this report is unlawful and offenders may be prosecuted to the fullest extent of the law.